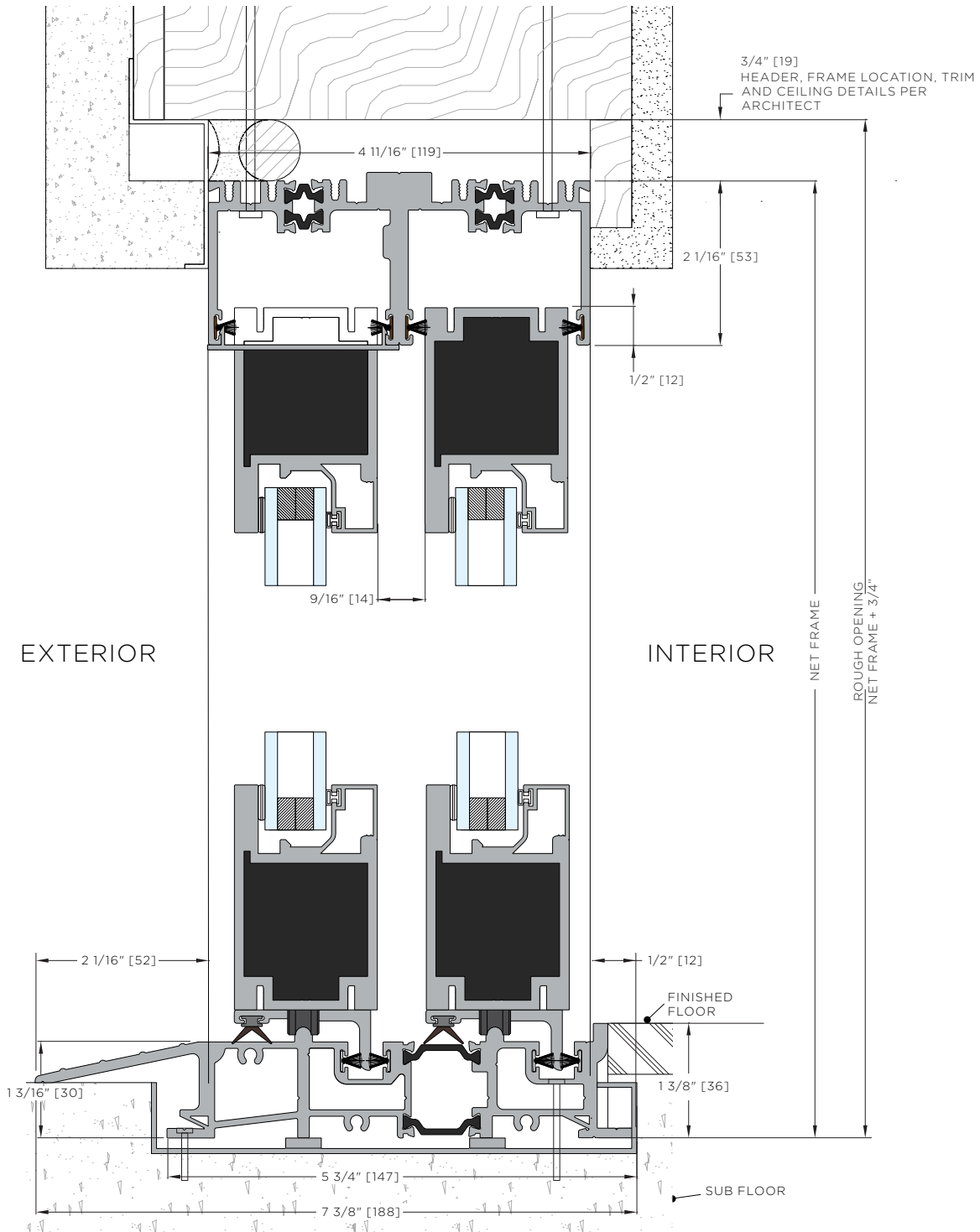


ALUMINUM XO SLIDER

The **ADA Compliant Sill** is an option when interior and exterior require a maximum sill height from finished floor of 1/2" or less. Adequate overhangs are recommended to reduce the risk of water infiltration.

**NOTE:** Weep system to be prepared by others when necessary.



ALUMINUM XO SLIDER

**LaCantina Doors** Aluminum sliding door frame depth is 2 5/16" per panel as standard. The location of the **LaCantina Doors** frame in the wall condition will also depend on the trim detail desired.

